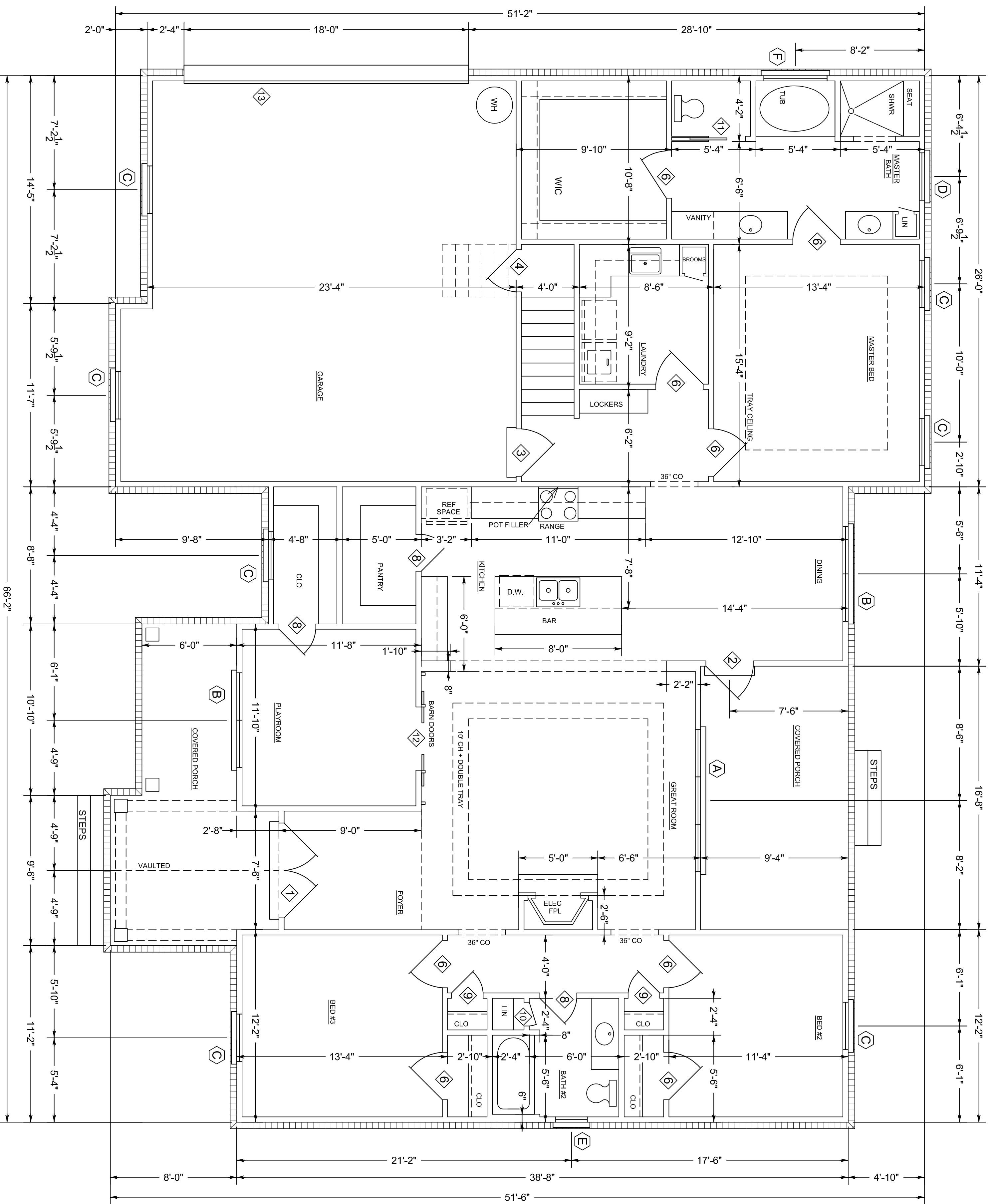
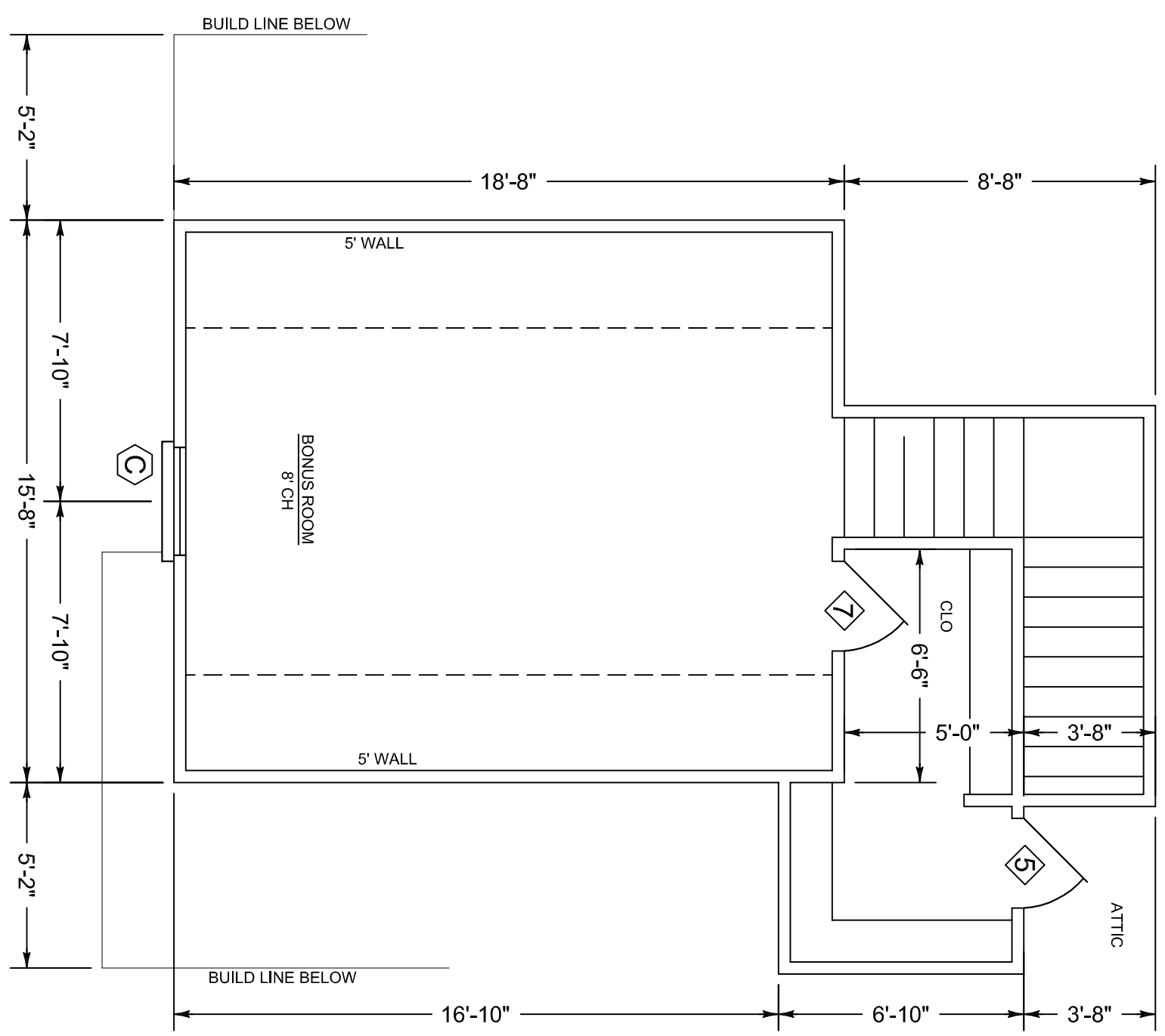


WINDOW SCHEDULE			
MARK	SIZE	TYPE	REMARKS
(A)	(3) 3'-0" x 5'-0"	SINGLE HUNG	VINYL INSUL.
(B)	(2) 3'-0" x 5'-0"	"	"
(C)	3'-0" x 5'-0"	SINGLE HUNG FRONT CASE	"
(D)	3'-0" x 3'-0"	"	"
(E)	2'-0" x 3'-0"	SINGLE HUNG FRONT CASE	"
(F)	4'-0" x 4'-0"	FIXED OBSCURE GLASS	"

DOOR SCHEDULE			
MARK	SIZE	TYPE	REMARKS
(1)	(2) 3'-0" x 6'-6" x 1 3/4	3/4 LITE	EXTERIOR METAL INSUL.
(2)	3'-0" x 6'-6" x 1 3/4	3/4 LITE	"
(3)	3'-0" x 6'-6" x 1 3/4	SIX PANEL	"
(4)	2'-6" x 6'-6" x 1 3/4	"	"
(5)	2'-6" x 6'-6" x 1 3/4	"	"
(6)	3'-0" x 6'-6" x 1 3/8	SIX PANEL	INTERIOR MASONITE
(7)	2'-6" x 6'-6" x 1 3/8	"	"
(8)	2'-4" x 6'-6" x 1 3/8	"	"
(9)	2'-0" x 6'-6" x 1 3/8	"	"
(10)	1'-6" x 6'-6" x 1 3/8	THREE PANEL	"
(11)	2'-4" x 6'-6" x 1 3/8	SIX PANEL / POCKET	"
(12)	(2) 2'-0" x 6'-6" x 1 3/8	BARN STYLE	"
(13)	18'-0" x 7'-0"	OVERHEAD GARAGE	STEEL



**FLOOR PLAN**  
SCALE 1/4" = 1'-0"

SQUARE FOOTAGE  
 MAIN FLOOR: 2037  
 BONUS ROOM: 381  
 GARAGE: 269  
 PORCHES: 317  
 GRAND TOTAL: 3304

<b>Claire's Home Designs</b> 5775 Montgomery Hwy. Ste. 2 A new home for: The Turvin Family	September 2019	Heated sq. ft: 2418
	Plan no. 1921-EZT	Unheated sq. ft: 942

NOTE: BUILDER AND OWNER TO VERIFY DIMENSIONS, NOTES AND ALL CONDITIONS OF PLANS PRIOR TO CONSTRUCTION. PLAN SERVICE IS NOT RESPONSIBLE FOR ERRORS OR OMISSIONS.

NOTE: 1. 9'-0" CEILING HEIGHT UNLESS OTHERWISE NOTED