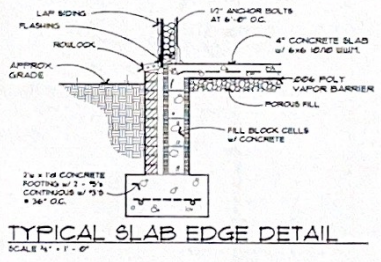
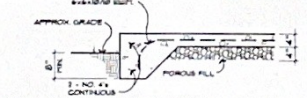


**FOUNDATION PLAN**  
SCALE: 1/4" = 1'-0"

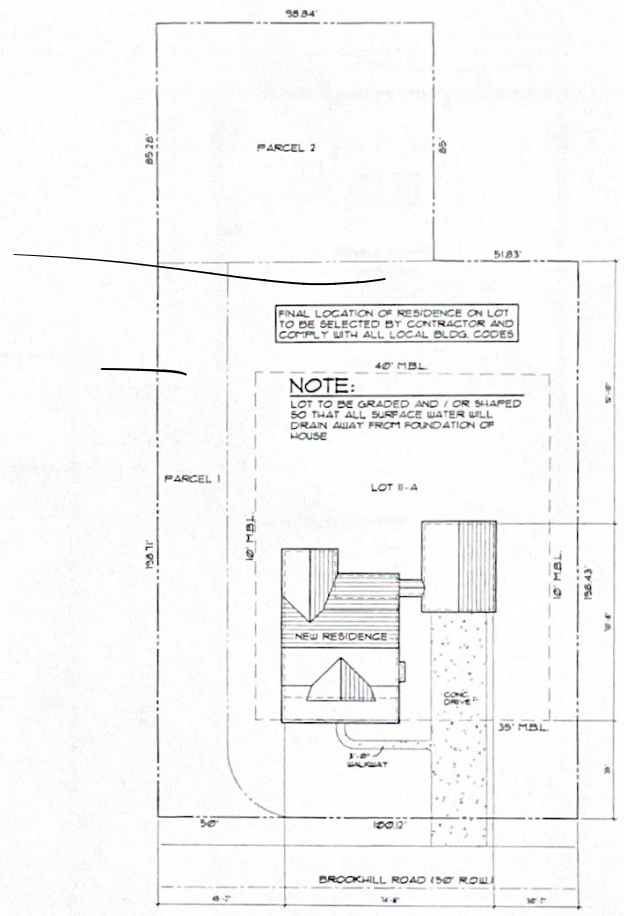
**NOTE:**  
VERIFY LOCATION OF ALL GRADE BEAMS  
W/ TRUSS MANUFACTURER PRIOR TO  
FOURING SLAB



**TYPICAL SLAB EDGE DETAIL**  
SCALE: 1/4" = 1'-0"



**TYPICAL THICKENED SLAB DETAIL**  
SCALE: 1/4" = 1'-0"



**SITE PLAN**  
SCALE: 1" = 20'-0"

LOT AREA = 0.99 ACRES ±

**LOT II BLOCK A PLUS  
PARCEL 1 AND PARCEL 2  
FORREST BROOK SUBDIVISION  
DOTHAN, ALABAMA**

FIN. GAR. ELEV. = 105'  
FIN. FLR. ELEV. = 102.83'  
ALL ELEVATIONS ARE ASSUMED

A NEW RESIDENCE BUILT FOR  
**MR. AND MRS. JESSE ADDISON**  
DOTHAN, ALABAMA

CONTRACTOR TO VERIFY ALL METERS, SEALS,  
AND STAMPS ARE VALID AND IN COMPLIANCE  
WITH ALL APPLICABLE REGULATIONS.  
ALL RIGHTS RESERVED. NO PART OF  
THIS DRAWING OR ANY INFORMATION  
HEREON MAY BE REPRODUCED OR  
TRANSMITTED IN ANY FORM OR BY  
ANY MEANS, ELECTRONIC OR MECHANICAL,  
INCLUDING PHOTOCOPYING, RECORDING,  
OR BY ANY INFORMATION STORAGE AND  
RETRIEVAL SYSTEM.

**VAUGHN DESIGN**  
PLAN NO. 2474

ELECTRICAL LEGEND	
⊞	AG. TOGGLE TYPE SWITCH (SHTTYV, SEA. 47 AFF.)
⊞	DUPLICATION - 3 WIRE GROUNDING TYPE, SV. BA. AS REQ. BY AFF.
⊞	DUPLICATION AS ABOVE WITH GROUND FAULT CIRCUIT INTERRUPTER
⊞	DUPLICATION AS ABOVE WITH GROUND FAULT CIRCUIT INTERRUPTER
⊞	DUPLICATION AS ABOVE WITH GROUND FAULT CIRCUIT INTERRUPTER
⊞	DUPLICATION AS ABOVE WITH GROUND FAULT CIRCUIT INTERRUPTER
⊞	DUPLICATION AS ABOVE WITH GROUND FAULT CIRCUIT INTERRUPTER
⊞	FAN / LIGHT COFFER
⊞	4" TUBE - FLUORESCENT FIXTURE, SURFACE MOUNTED
⊞	2" TUBE - FLUORESCENT FIXTURE, SURFACE MOUNTED
⊞	SURFACE MOUNTED INCANDESCENT LIGHT
⊞	EXTERIOR DOWNLIGHT, SOHIT RECEIVED
⊞	INTERIOR DOWNLIGHT, CEILING RECEIVED
⊞	INTERIOR DOWNLIGHT, CEILING RECEIVED WITH PIVOTING ETERNAL TRIM
⊞	CHANDELIER
⊞	WALL SCONCE
⊞	EXTERIOR SOHIT MOUNTED FLOOD LIGHT
⊞	INTERIOR CEILING FAN
⊞	EXTERIOR CEILING FAN
⊞	ELECTRICAL PANEL, SEE PLANS FOR APPROPRIATE
⊞	ELECTRICAL PETER w/ UNDERGROUND SERVICE
⊞	WIRE
⊞	EXHAUST FAN
⊞	GARAGE DISPOSAL
⊞	HANGING PENDANT LIGHT
⊞	3 TONE ELECTRONIC CHIME - BUTTON ACTIVATED
⊞	DIS - BACKLITE BUTTON SWITCH FOR CHIMES
⊞	SD - SMOKE DETECTOR w/ BATTERY BACKUP

### DOOR SCHEDULE

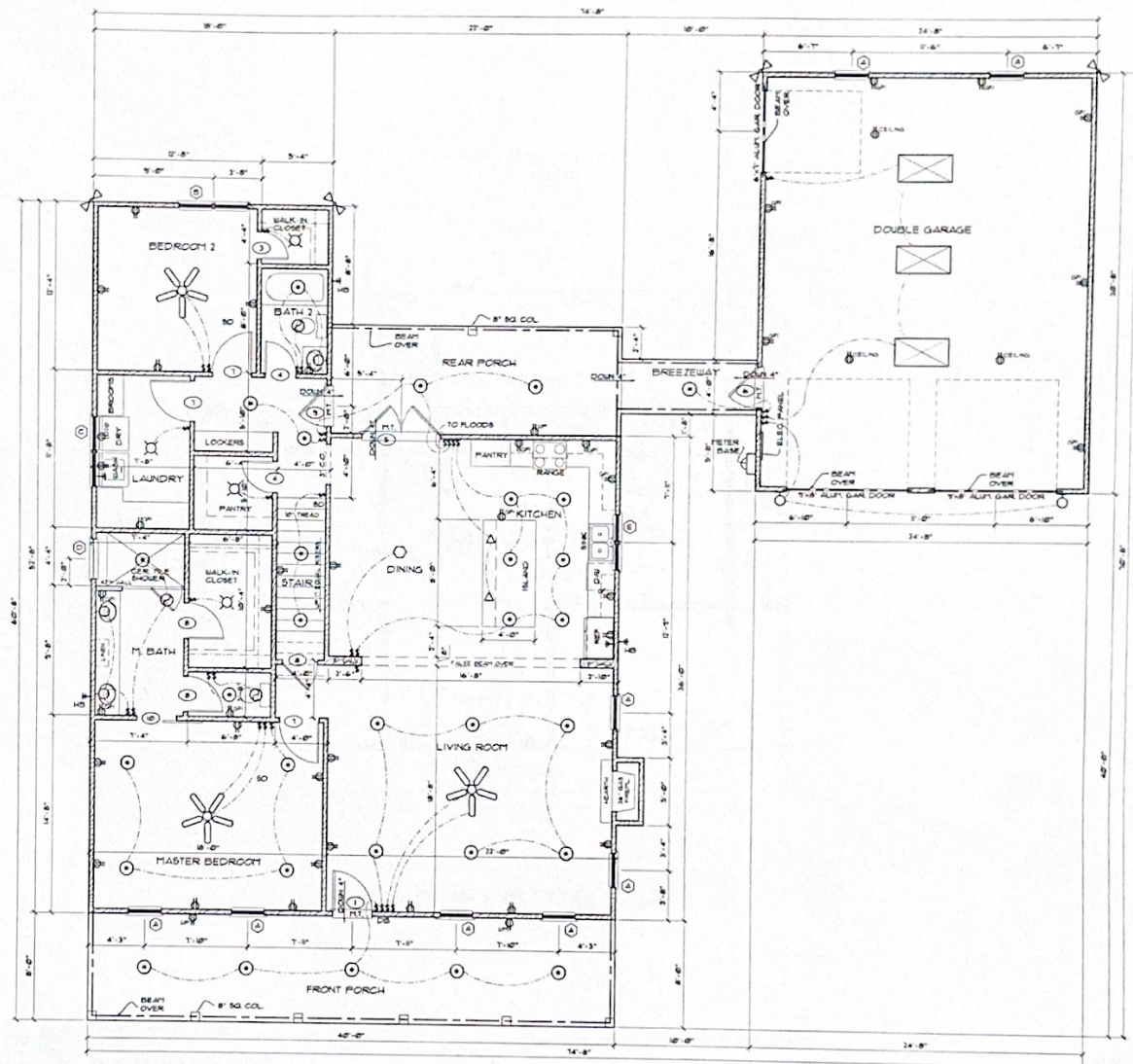
- 1 3'-0" x 6'-0" x 1 1/2" OWNER TO SELECT
- 2 2'-0" x 6'-0" x 1 1/2" (PAIR) 6 PANEL MASONITE INTERIOR
- 3 2'-0" x 6'-0" x 1 1/2" 6 PANEL MASONITE INTERIOR
- 4 2'-4" x 6'-0" x 1 1/2" 6 PANEL MASONITE INTERIOR
- 5 3'-0" x 6'-0" x 1 1/2" (PAIR) FULL FRENCH METAL INSUL. EXTERIOR
- 6 3'-0" x 6'-0" x 1 1/2" 6 PANEL METAL INSULATED EXTERIOR
- 7 3'-0" x 6'-0" x 1 1/2" 6 PANEL MASONITE INTERIOR
- 8 2'-0" x 6'-0" x 1 1/2" 6 PANEL MASONITE INTERIOR
- 9 3'-0" x 6'-0" x 1 1/2" FULL FRENCH METAL INSUL. EXTERIOR
- 10 3'-0" x 6'-0" x 1 1/2" SLIDING BARN DOOR INTERIOR

### WINDOW SCHEDULE

- |   |                      |                                 |
|---|----------------------|---------------------------------|
| A | 2'-6" x 6'-0"        | SINGLE HUNG - VINTL - INSULATED |
| B | 2'-6" x 6'-0" (PAIR) | SINGLE HUNG - VINTL - INSULATED |
| C | 2'-6" x 3'-0" (PAIR) | SINGLE HUNG - VINTL - INSULATED |
| D | 3'-0" x 1'-0"        | FIXED GLASS - VINTL - INSULATED |
| E | 2'-0" x 3'-0" (PAIR) | SINGLE HUNG - VINTL - INSULATED |
| F | 2'-6" x 5'-0" (PAIR) | SINGLE HUNG - VINTL - INSULATED |
| G | 2'-6" x 4'-0"        | SINGLE HUNG - VINTL - INSULATED |

### SQUARE FOOTAGE TOTALS:

FIRST FLOOR HEATED SQUARE FOOTAGE = 1140 SQ. FT.  
 SECOND FLOOR HEATED SQUARE FOOTAGE = 134 SQ. FT.  
 TOTAL HEATED SQUARE FOOTAGE = 1274 SQ. FT.  
 FRONT PORCH SQUARE FOOTAGE = 310 SQ. FT.  
 REAR PORCH + BREEZEWAY SQUARE FOOTAGE = 716 SQ. FT.  
 GARAGE SQUARE FOOTAGE = 156 SQ. FT.  
 TOTAL UNDER ROOF = 3166 SQ. FT.



### FLOOR PLAN - FIRST FLOOR

SCALE: 1/4" = 1'-0"

\* SET WINDOWS ON FIRST FLOOR @ 1'-4" AFF. \*

NOTE:

CONTRACTOR TO VERIFY LOCATION OF ALL PHONE JACKS AND CABLE TV OUTLETS PRIOR TO INSTALLATION

CONTRACTOR TO VERIFY ALL SYMBOLS, NOTES, AND DIMENSIONS PRIOR TO CONSTRUCTION. THIS PLAN IS THE PROPERTY OF VAUGHN DESIGN AND SHALL REMAIN THE PROPERTY OF VAUGHN DESIGN.

VAUGHN DESIGN

PLAN NO. 2474

## ELECTRICAL LEGEND

1	AC 100/400 TYPE SWITCH OR 277/400 3P/4 40' AMP
⊕	DUPLEX RECEPT. - 3 WIRE GROUNDING TYPE, DEV. BA. AS REQ. BY APF
⊕	DUPLEX RECEPTACLE AS ABOVE WITH ARC FAULT CIRCUIT INTERRUPTER
⊕	DUPLEX RECEPTACLE AS ABOVE WITH GROUND FAULT CIRCUIT INTERRUPTER
⊕	DUPLEX RECEPTACLE AS ABOVE WEATHERPROOF BY APF
⊕	DUPLEX RECEPTACLE AS ABOVE - 3 WIRE GROUNDING TYPE, DEV.
⊕	FAN / LIGHT COMBO
⊕	48" x 4 TUBE - FLUORESCENT FIXTURE, SURFACE MOUNTED
⊕	3 TUBE - FLUORESCENT FIXTURE, SURFACE MOUNTED
⊕	SURFACE MOUNTED INCANDESCENT LIGHT
⊕	EXTERIOR DOWNLIGHT, SORFIT RECESSED
⊕	INTERIOR DOWNLIGHT, CEILING RECESSED
⊕	INTERIOR DOWNLIGHT, CEILING RECESSED WITH ROTATING STEELBALL FINN
⊕	CHANDLIER
⊕	BALL SOCKET
⊕	EXTERIOR SORFIT MOUNTED FLOOD LIGHT
⊕	INTERIOR CEILING FAN
⊕	EXTERIOR CEILING FAN
⊕	ELECTRICAL PANEL, SEE PLANS FOR APPROPRIATE
⊕	ELECTRICAL METER w/ UNDERGROUND SERVICE
---	WIRE
⊕	EXHAUST FAN
⊕	GARBAGE DISPOSAL
⊕	HANGING PENDANT LIGHT
⊕	3 TONE ELECTRONIC CHIME - BUTTON ACTIVATED
⊕	DB - BACKLITE BUTTON SWITCH FOR CHIMES
⊕	SD - SMOKE DETECTOR w/ BATTERY BACKUP

## DOOR SCHEDULE

1	3'-0" x 8'-0" x 1 3/4"	COWNER TO SELECT
2	2'-0" x 6'-8" x 1 3/8"	(PAIR) 6 PANEL MASONITE INTERIOR
3	7'-0" x 6'-8" x 1 3/8"	6 PANEL MASONITE INTERIOR
4	2'-4" x 6'-8" x 1 3/8"	6 PANEL MASONITE INTERIOR
5	3'-0" x 6'-8" x 1 3/4"	(PAIR) FULL FRENCH METAL INSUL. EXTERIOR
6	3'-0" x 6'-8" x 1 3/4"	6 PANEL METAL INSULATED EXTERIOR
7	3'-0" x 6'-8" x 1 3/8"	6 PANEL MASONITE INTERIOR
8	7'-0" x 6'-8" x 1 3/8"	6 PANEL MASONITE INTERIOR
9	3'-0" x 6'-8" x 1 3/4"	FULL FRENCH METAL INSUL. EXTERIOR
10	3'-0" x 6'-8" x 1 3/8"	SLIDING BARN DOOR INTERIOR

## WINDOW SCHEDULE

A	2'-6" x 6'-0"	SINGLE HUNG - VINYL - INSULATED
B	2'-6" x 6'-0"	(PAIR) SINGLE HUNG - VINYL - INSULATED
C	2'-6" x 3'-0"	(PAIR) SINGLE HUNG - VINYL - INSULATED
D	3'-0" x 1'-0"	FIXED GLASS - VINYL - INSULATED
E	7'-0" x 3'-0"	(PAIR) SINGLE HUNG - VINYL - INSULATED
F	2'-6" x 5'-0"	(PAIR) SINGLE HUNG - VINYL - INSULATED
G	2'-6" x 4'-0"	SINGLE HUNG - VINYL - INSULATED

## SQUARE FOOTAGE TOTALS:

FIRST FLOOR HEATED SQUARE FOOTAGE = 1740 SQ. FT.  
 SECOND FLOOR HEATED SQUARE FOOTAGE = 134 SQ. FT.  
 TOTAL HEATED SQUARE FOOTAGE = 2474 SQ. FT.  
 FRONT PORCH SQUARE FOOTAGE = 310 SQ. FT.  
 REAR PORCH + BREEZEWAY SQUARE FOOTAGE = 210 SQ. FT.  
 GARAGE SQUARE FOOTAGE = 156 SQ. FT.  
 TOTAL UNDER ROOF = 3166 SQ. FT.

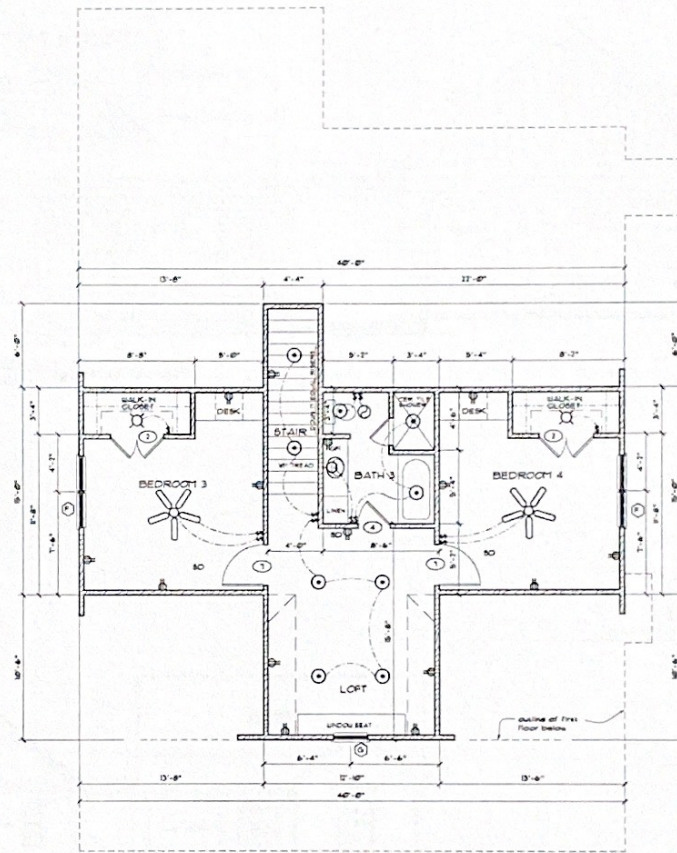
• SET WINDOWS ON SECOND FLOOR @ 6'-8" AFF. •

## NOTE:

CONTRACTOR TO VERIFY LOCATION OF ALL PHONE JACKS AND CABLE TV OUTLETS PRIOR TO INSTALLATION.

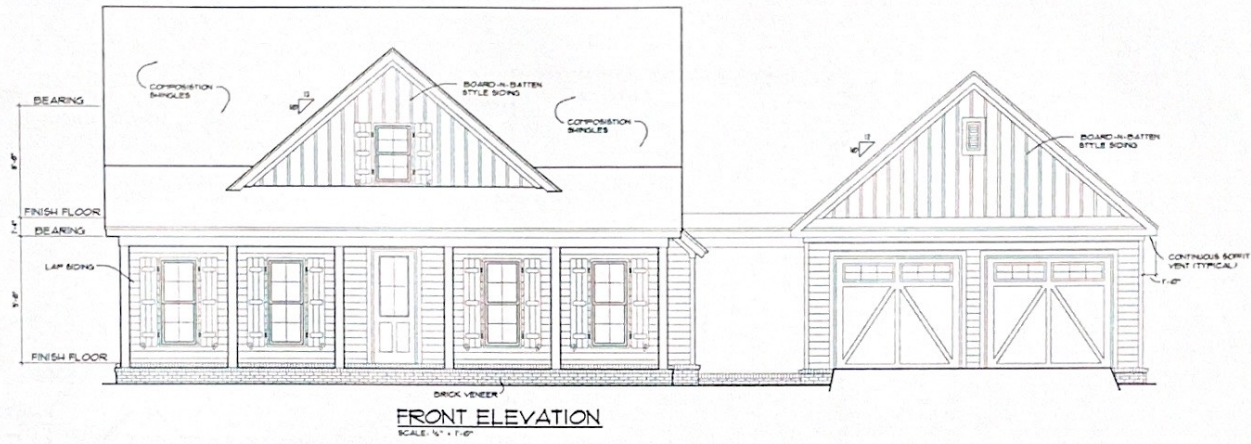
CONTRACTOR TO VERIFY LOCATION OF ALL PHONE JACKS AND CABLE TV OUTLETS PRIOR TO INSTALLATION.

VAUGHN DESIGN  
 PLAN NO. 2474

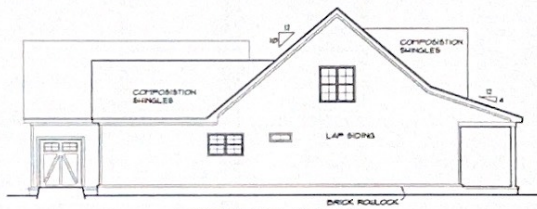


FLOOR PLAN - SECOND FLOOR

SCALE: 1/4" = 1'-0"



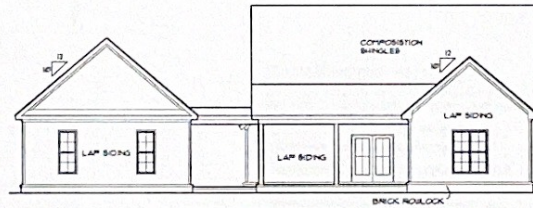
**FRONT ELEVATION**  
SCALE: 1/4" = 1'-0"



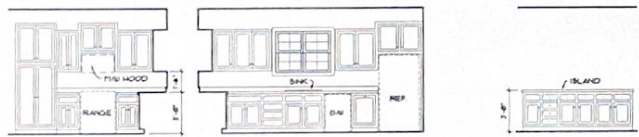
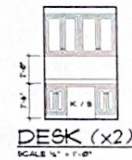
**LEFT ELEVATION**  
SCALE: 1/4" = 1'-0"



**RIGHT ELEVATION**  
SCALE: 1/4" = 1'-0"



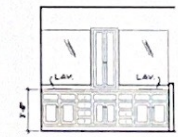
**REAR ELEVATION**  
SCALE: 1/4" = 1'-0"



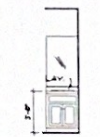
**KITCHEN**  
SCALE: 1/4" = 1'-0"



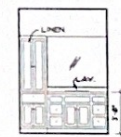
**LAUNDRY**  
SCALE: 1/4" = 1'-0"



**MASTER BATH**  
SCALE: 1/4" = 1'-0"



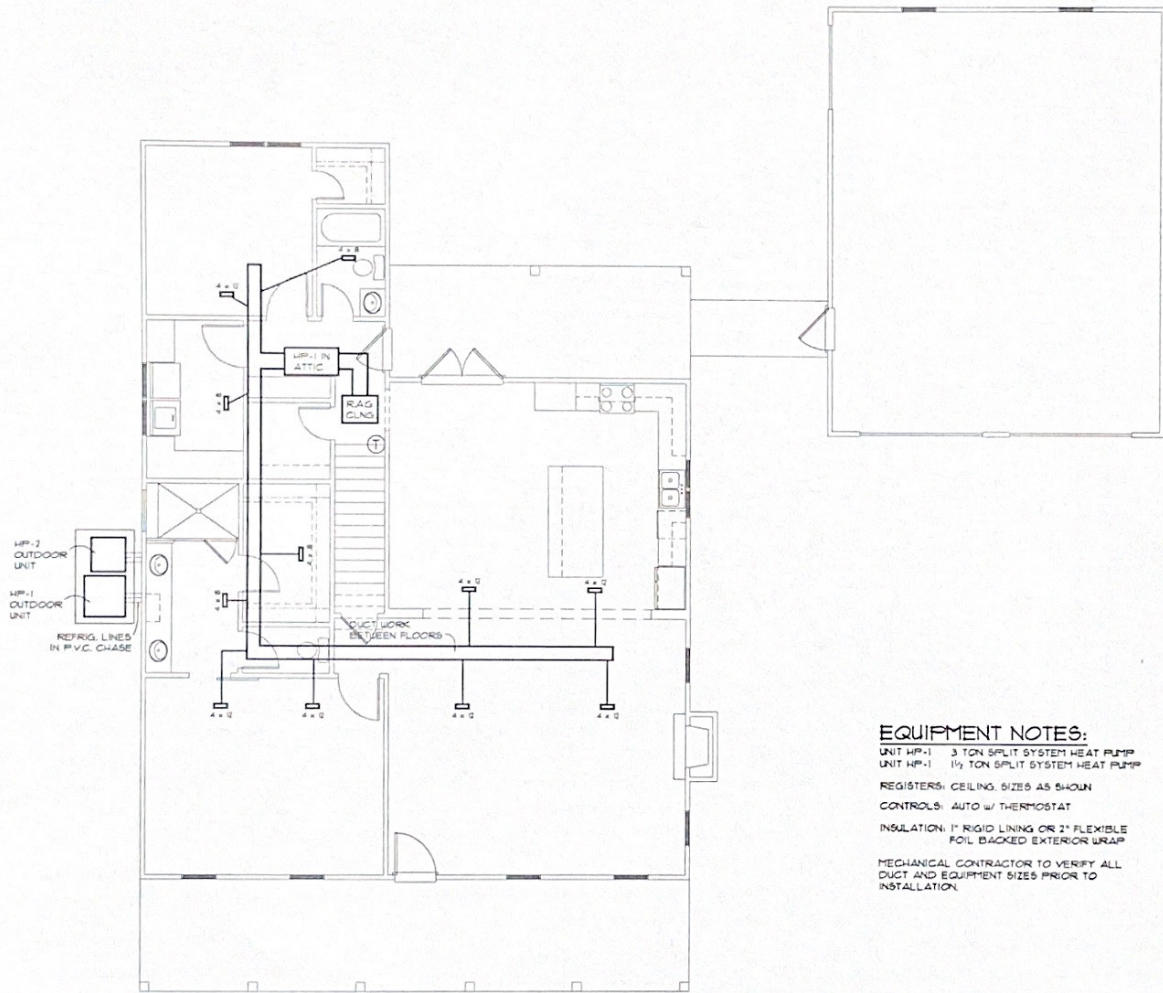
**BATH 2**  
SCALE: 1/4" = 1'-0"



**BATH 3**  
SCALE: 1/4" = 1'-0"

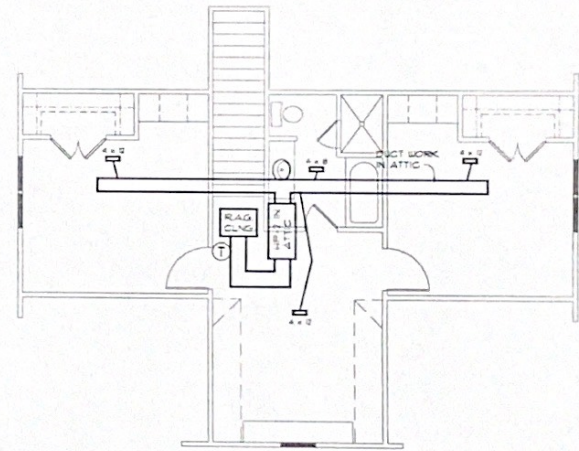
CONSTRUCTION OF LIGHTING FIXTURES, SWITCHES, AND OUTLETS TO BE DETERMINED BY THE ELECTRICAL CONTRACTOR. ALL FINISHES TO BE DETERMINED BY THE ARCHITECT. SEE SPECIFICATIONS FOR MATERIALS AND METHODS. COPYRIGHT © 2018

VAUGHN DESIGN  
PLAN NO. 2474



**MECHANICAL PLAN - FIRST FLOOR**  
SCALE: 1/4" = 1'-0"

**EQUIPMENT NOTES:**  
 UNIT HP-1 3 TON SPLIT SYSTEM HEAT PUMP  
 UNIT HP-1 1 1/2 TON SPLIT SYSTEM HEAT PUMP  
 REGISTERS: CEILING SIZES AS SHOWN  
 CONTROLS: AUTO w/ THERMOSTAT  
 INSULATION: 1" RIGID LINING OR 2" FLEXIBLE FOIL BACKED EXTERIOR WRAP  
 MECHANICAL CONTRACTOR TO VERIFY ALL DUCT AND EQUIPMENT SIZES PRIOR TO INSTALLATION.



**MECHANICAL PLAN - SECOND FLOOR**  
SCALE: 1/4" = 1'-0"

CONTRACTOR TO VERIFY ALL REGISTER SIZES AND DUCTWORK PRIOR TO INSTALLATION.  
 ALL REGISTER SIZES ARE SHOWN IN THIS PLAN.  
 THE USE OF THIS PLAN IS SUBJECT TO THE TERMS OF THE CONTRACT.  
 VAUGHN DESIGN

PLAN NO. 2474